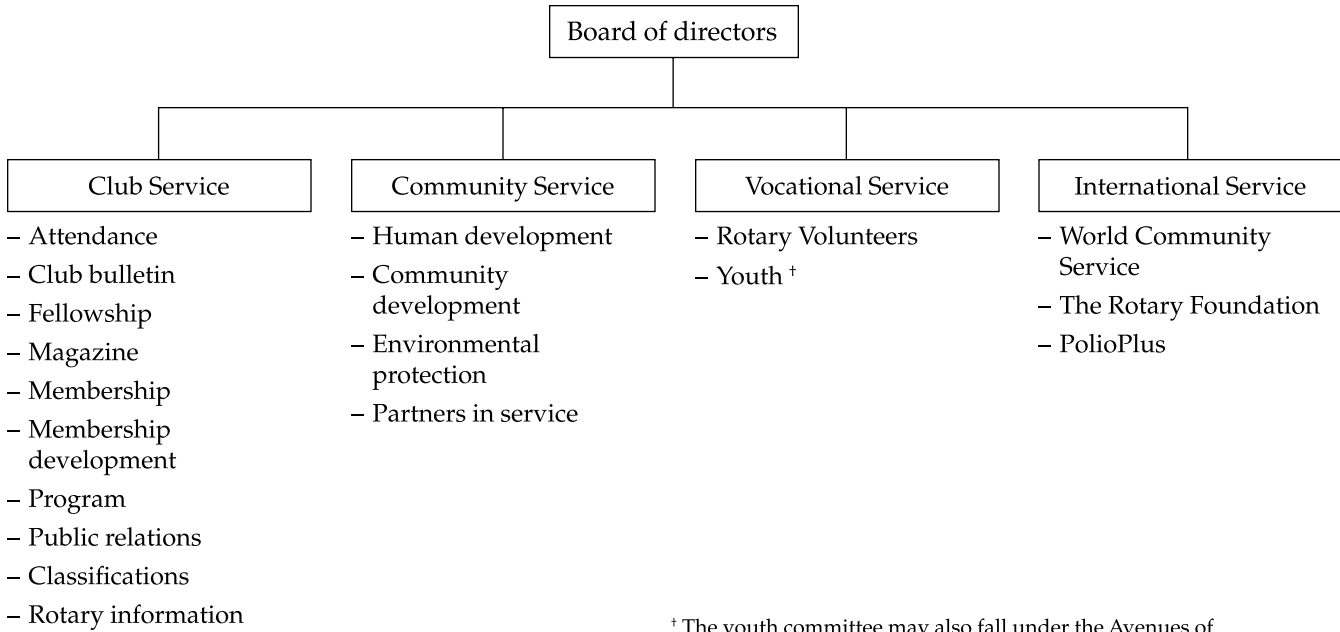


## Club Committee and Subcommittee Structure

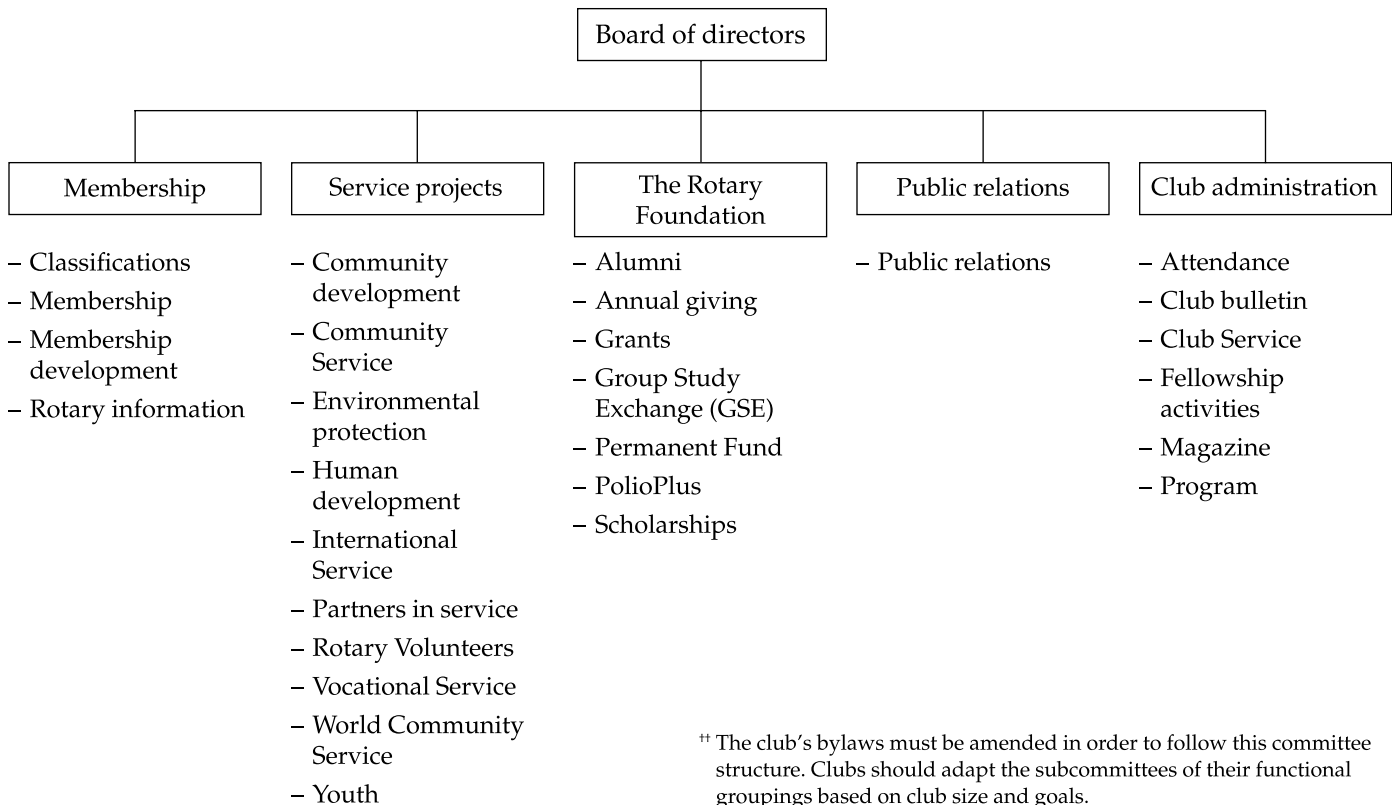
Based on the Recommended Rotary Club Bylaws and the Rotary Code of Policies



<sup>†</sup> The youth committee may also fall under the Avenues of Community Service or International Service.

## Optional Club Committee and Subcommittee Structure

Based on functional grouping <sup>††</sup>



<sup>††</sup> The club's bylaws must be amended in order to follow this committee structure. Clubs should adapt the subcommittees of their functional groupings based on club size and goals.